

RESEARCH

Open Access



Synbiotic effects of β -glucans from cauliflower mushroom and *Lactobacillus fermentum* on metabolic changes and gut microbiome in estrogen-deficient rats

Seong-Yeop Jeong¹, Suna Kang², Cao Shi Hua², Zhang Ting² and Sunmin Park^{2*} 

Abstract

Background: We investigated whether the long-term consumption of a symbiotic formulation with *Lactobacillus fermentum* (probiotic) and β -glucan from cauliflower mushroom (prebiotic) would delay the progression of post-menopausal symptoms in ovariectomized (OVX) rats and explored their mechanisms of action, including changes in gut microbiota.

Methods: OVX rats were fed with high-fat diets containing 1% dextrin (control), 1% lyophilized cauliflower mushroom extract (CFM), 0.1% *L. fermentum* JS (LFE), 1% CFM plus 0.1% LFE (CFLF), or 30 μ g 17 β -estradiol/kg body weight (positive-control) for 8 weeks.

Results: CFM contained 95.8% β -glucans. OVX increased the ratio of *Firmicutes* and *Bacteroidetes* in the large intestines. Only CFLF lowered tail skin temperature without increasing serum 17 β -estradiol and uterine index. Visceral fat mass was lower in CFLF and positive-control groups by increasing daily energy expenditure and fat oxidation. Dyslipidemia induced by OVX was improved by CFM and CFLF as much as in the positive-control group. Homeostasis model assessment estimate of insulin resistance was lower in CFLF than in the positive-control. Hepatic insulin signaling (pAkt \rightarrow GSK-3 β) was potentiated in the ascending order of the control, LFE, CFM, CFLF, and positive-control. AMPK phosphorylation showed similar patterns of hepatic insulin signaling but LFE increased it more than CFM. The changes in gut microbiota were prevented by CFLF in OVX rats, and the ratio of *Firmicutes* and *Bacteroidetes* in the CFLF was similar to the positive-control group.

Conclusion: OVX changed gut microbiota and was associated with menopausal symptoms; however, the synbiotics, CFM and LFE, prevented menopausal symptoms and improved the gut microbiota in estrogen-deficient rats.

Keywords: Cauliflower mushroom, β -Glucan, *Lactobacillus fermentum*, Gut microbiota, Ovariectomy, Synbiotics

Background

Estrogen deficiency causes disturbances of energy, lipid, glucose, and bone metabolism and induces vasomotor symptoms such as daytime hot flashes, night sweats, sleep and mood disorder, and difficulty in concentration. These menopausal symptoms result in a lower quality of life and increase the incidence of metabolic disease. Although hormone replacement therapy ultimately prevents menopausal symptoms and improves quality of

life, hormone replacement therapy is often not recommended due to its risk of adverse side-effects [1]. Alternative therapies with less adverse effects have been suggested for the treatment of menopausal symptoms.

Firmicutes among the gut microbiota is associated with obesity and its progression towards metabolic disease [2], and dietary interventions to modulate the gut microbiota can alleviate metabolic diseases [3]. Sex hormones including estrogen and testosterone have been reported to modulate microbial communities [4], and gut microbiota influence systemic levels of sex hormones [5, 6]. Intestinal tissues mainly contain estrogen receptor (ER)- β . ER- β affects the composition of gut microbiota

* Correspondence: smpark@hoseo.edu

²Department of Food & Nutrition, Obesity/Diabetes Center, Hoseo University, 165 Sechul-Ri, BaeBang-Yup, Asan-Si, ChungNam-Do 336-795, South Korea
Full list of author information is available at the end of the article

in female mice [7]. Cox-York et al. [8] have demonstrated that ovariectomized (OVX) rats with higher aerobic capacity increase microbial diversity and the number of the *Bacteroidetes* phylum in the gut. In addition, equol production in the gut produces the beneficial effects of soy and isoflavones on menopausal symptoms and gut microbiota is associated with equol production in the gut from soy-isoflavone concentrates in post-menopausal women [9]. Thus, the changes of gut microbiota composition can prevent the menopausal symptoms.

Diets including prebiotics and probiotics can modulate gut microbiota [7, 10]. Probiotics consumption seems to be a feasible approach to modulate the intestinal microbiota and to maintain or restore human health [11]. *Bifidobacterium* and *Lactobacillus*, natural components of the colon microbiota, are the most commonly used probiotics in many functional foods and dietary supplements. Various *Lactobacillus* species such as *Lactobacillus fermentum*, *Lactobacillus plantarium*, and *Lactobacillus reuteri* are naturally present in fermented foods and milk products [12] and especially, *L. fermentum*, which was isolated from human milk, can inhibit pathogens, decrease cholesterol synthesis, and change gut microbiota [13, 14]. Dietary supplementation with prebiotics, including lactulose, galactooligosaccharides, and fructo-oligosaccharides, increases the contents and proportion of bifidobacteria in the intestines [15] and improves nutrient absorption, prevents gut inflammation, and stimulates energy and glucose metabolism [16, 17]. Synbiotics, a combination of probiotics and prebiotics, may have better efficacy for changing gut microbiota and to improving metabolic symptoms [17]. However, there are still some debates about consumption of prebiotics and probiotics, gut microbiota, and metabolic efficacy.

Cauliflower mushroom (*Sparassis crispa* Wulf.:Fr.) contains about 40% of six-branched 1,3-beta-glucan that can change gut microbiota [18, 19]. However, β -glucan is known to improve inflammation and to alleviate inflammatory bowel diseases, cancer, atopic dermatitis, and arthritis. In addition, β -glucan potentiates glucagon-like peptide-1 secretion in L cells in the intestines to improve glucose metabolism. Thus, cauliflower mushroom may prevent the energy, glucose, lipid, and bone metabolism disturbances that occur in estrogen-deficient animals while modulating the gut microbiota.

We hypothesized that the long-term consumption of *L. fermentum* (probiotics) and cauliflower mushroom (prebiotics) would prevent and/or delay the progression of post-menopausal symptoms in estrogen-deficient animals with diet-induced obesity. The present study tested this hypothesis and explored their mechanisms of action in OVX rats fed a high-fat diet supplemented with *L. fermentum* and cauliflower mushroom.

Methods

Water extract of cauliflower mushroom and β -glucan contents

Cauliflower mushroom was purchased from Haemaru Biotechnology (Asan, Korea). Dried cauliflower mushroom was powdered, and the powder was extracted with water at 90 °C for 4 h in an extractor. The extract was concentrated by 50% with a rotary evaporator and centrifuged at 8000 \times g for 30 min. The concentrates were then freeze dried, and the yield of the mushroom was 28.8%.

To calculate the β -glucan contents, cauliflower mushroom extract was sequentially degraded with digestive enzymes by incubating in a shaking incubator with specific pH and temperature for 2 h. The enzymes used to digest the cauliflower mushroom were amylase (20 units, pH 6.9) at 20 °C, cellulase (50 units, pH 5.0) at 37 °C, protease (10 units, pH 7.5) at 37 °C, and amyloglucosidase (70 units, pH 4.8) at 60 °C. After digesting the cauliflower mushroom with enzymes, 95% ethanol was added into the digested mixture and the mixture was left at 4 °C for 12 h. The mixture was centrifuged at 10,000 rpm for 10 min, and the precipitates were mixed with water. The mixture was homogenized and diluted with distilled water, and then sulfuric acid was added (1:5). The mixture was left at room temperature for 20 min, and the optical density was measured at 470 nm. Glucose solution was used as a standard.

Ovariectomy operation

Female Sprague–Dawley rats (weighing 271 \pm 9 g) were housed individually in cages in a controlled environment (23 °C, with a 12-h light/dark cycle). Animal care and surgery were conducted according to the NIH Guide for the Care and Use of Laboratory Animals. The Sprague–Dawley rats from DBL (Yeumsung-Kun, Korea) had an acclimation for 1 week in our animal facility. The rats had an ovariectomy (OVX) operation under anesthesia by a subcutaneous injection of a mixture of ketamine and xylazine (100 and 10 mg/kg body weight, respectively) [20]. A mid-ventral incision was made, and both ovaries were dissected after each ovary was separated by the ligation of the most proximal portion. The OVX rats were randomly assigned into five groups of 10 each.

L. fermentum JS is an acid and bile salt-resistant lactic acid bacteria [21]. *L. fermentum* JS (KCCM 10499) has been registered as a probiotic for improving intestinal health and immunity [22, 23] in Korea Food & Drug Administration. *L. fermentum* JS KCCM 10499 was routinely grown in Difco MRS broth or agar (BD, NJ, USA) and incubated in shaking incubator (Daihan Science, Wonjoo, Korea) with aerobic condition at 37 °C for 24 h. After incubation, the media was centrifuged at 900 \times g and the precipitates were lyophilized. The freeze-dried powder contained 1×10^8 – 1×10^{10} CFU *L. fermentum* JS/g.

Diet preparation

High-fat diets were used in the study since they are known to exacerbate the progression of menopausal symptoms compared with a low fat diet [24–26]. Water extracts of cauliflower mushroom and *L. fermentum* JS KCCM 10499 were purchased from Haemaru-Biotech (Cheonan, Korea) and Well-being LS (Gang Reung, Korea), respectively, and were supplemented into high-fat diets. The high-fat diet was a semi-purified modified AIN-93 formulation containing 37 energy percent (En%) from carbohydrates, 20 En% from protein, and 43 En% from fats [27]. The sources of carbohydrate, protein, and fat were starch plus sugar, casein (milk protein), and lard (CJ Co., Seoul, Korea), respectively. CFM included 1% lyophilized water extracts of cauliflower mushroom plus 0.1% casein; LFE contained 0.1% *L. fermentum* (1×10^8 – 1×10^{10} CFU/g) plus 1% dextrin; CFLF included 1% CFM plus 0.1% LFE; control contained 1% dextrin plus 0.1% casein; or positive-control contained 30 µg/kg body weight 17β-estradiol plus 1% dextrin and 0.1% casein. The CFM and LFE powders were homogeneously mixed with the vitamin and mineral mixture and sugar components of the diet. The mixture was sifted to remove the lumps. Each mixture was blended with the appropriate amounts of starch, casein, and lard, sifted again, and stored at 4 °C. The nutrient composition of the diets was the same. The amounts of each supplement consumed were calculated from daily food intake.

Experimental design

Sixty OVX rats were randomly assigned to the following groups: (1) CFM, (2) LFE, (3) CFLF, (4) positive-control (30 µg/kg body weight 17β-estradiol), or (5) OVX-control (dextrin; placebo). The OVX rats had free access to water and their respective diets for 8 weeks. After an overnight-fast, the serum glucose levels, food intake, and body weights were measured every Tuesday at 10 am.

Tail skin temperature

The tail skin temperature was measured during the dark-period every week of the experimental period using an infrared thermometer for small rodents (BIO-152-IRB, Bioseb, Chaville, France) [26]. Three measurements were made 10 min apart each time, and the average value was used as a single data point.

Body composition measurement

At the seventh week of the experimental period, the body composition of the rats was measured in a dual-energy X-ray absorptiometer (DEXA; Norland pDEXA Sabre; Norland Medical Systems Inc., Fort Atkinson, WI, USA) after calibrating it with a phantom supplied by the manufacturer. After anesthetization with ketamine and xylazine (100 and 10 mg/kg bw, respectively), bone mineral density (BMD) and lean body mass were

assessed in the leg and hip using the DEXA instrument equipped with the appropriate software for small animals [26]. Fat mass was measured in the leg and abdominal areas using the DEXA equipment.

Energy expenditure analysis by indirect calorimetry

At 2 days after the DEXA analysis, energy expenditure was assessed at the beginning of the dark-phase of the light/dark cycle after removing foods for 6 h. The rats were acclimated into the metabolic chambers (airflow = 800 mL/min) for 30 min, and then the chambers were connected with a computer-controlled O₂ and CO₂ measurement system (BIOPAC Systems, Inc., Goleta, CA). Oxygen consumption (VO₂) and carbon dioxide production (VCO₂) were measured over 1 min intervals and integrated over periods of 30 min. The VO₂ and VCO₂ values were corrected for the animals' metabolic body size (kg^{0.75}). The respiratory quotient and resting energy expenditure were calculated using reported equations [20, 26]. Carbohydrate and fat oxidation were calculated from non-protein oxygen consumption according to their relative oxidative proportions. They were reported as the amount of oxygen consumed per gram of substrate oxidized [24, 26].

Glucose homeostasis, lipid profiles, and sample collection at the end of experiment

An oral glucose tolerance test (OGTT) was performed on overnight-fasted animals at the eighth week. Blood samples were taken by tail bleeding at 0, 10, 20, 30, 40, 50, 60, 70, 80, 90, and 120 min after orally giving 2 g of glucose/kg body weight. The serum glucose levels were measured with a Glucose Analyzer II (Beckman, Palo Alto, CA). The serum insulin levels were determined at 0, 20, 40, 90, and 120 min using a radioimmunoassay kit (Linco Research, Billerica, MA). The areas under the curves (AUC) of the first (0–40 min) and second (40–120 min) parts for the serum glucose and insulin levels were calculated using the trapezoidal rule.

Three days after the OGTT, food was removed for 6 h and an intraperitoneal insulin tolerance test (IPITT) was conducted. The serum glucose levels were measured every 15 min for 90 mins after an intraperitoneal injection of insulin (0.75 U/kg body weight). At 2 days after the IPITT, the rats were anesthetized with ketamine and xylazine (100 and 10 mg/kg body weight, respectively) and human insulin (5 U/kg body weight) was injected through the inferior vena cava after collecting blood by abdominal cardiac puncture. The epididymal and retroperitoneal fat mass and uteri were then collected and weighed. The uterus index was calculated as the uterus weight divided by the body weight. Feces in the large intestine were collected from the large intestine of all rats in each group. Feces from two of samples were pooled to make five feces samples of each group. The pooled contents were mixed,

and the gut microbiomes were measured. Serum, tissue, and large intestine specimen were stored at -70°C for biochemical analysis.

Insulin resistance and insulin secretion capacity were estimated using the homeostasis model assessment estimate (HOMA) of insulin resistance (HOMA-IR) and insulin secretion (HOMA-B). HOMA-IR and HOMA-B were calculated as previously described [26, 28]. Serum 17β -estradiol levels were assessed by ELISA kits (Enzo Life Sciences, NY, USA). The levels of serum tumor necrosis factor (TNF)- α and monocyte chemoattractant protein-1 (MCP-1) were measured with ELISA kits (R & D Systems, Minneapolis, MN). Total cholesterol, HDL cholesterol, and triglycerides levels in the circulation were assessed by using colorimetry kits for (Asan Pharmaceutical, Seoul, Korea). Serum LDL cholesterol was calculated with the Friedewald equation [29].

Gut microbiome

Gut microbiome was measured from five feces samples from each group by Microgen (Seoul, Korea) by analyzing metagenome sequencing using next-generation sequencing. Bacterial DNA was extracted from each sample by Power water DNA Isolation Kit (MoBio, Carlsbad, CA) according to the manufacturer's instructions. Each library was prepared using PCR products according to the GS FLX plus library prep guide. Libraries were quantified using Picogreen assay (Victor 3). The emPCR, corresponding to clonal amplification of the purified library, was carried out using the GS-FLX plus emPCR Kit (454 Life Sciences, Branford, CT). Briefly, libraries were immobilized onto DNA capture beads. The library beads were added to amplification mix and oil, and the mixture was vigorously shaken on a Tissue Lyser II (Qiagen, Valencia, CA) to create "micro-reactors" containing both amplification mix and a single bead. Emulsion was dispensed into a 96-well plate and the PCR amplification program was run according to the manufacturer's recommendations. The 16S universal primers, 27F (5' GAGTTTGATCMTGGCT-CAG 3') and 518R (5' WTTACCGCGGCTGCTGG 3'), were used for the amplification of 16 s rRNA genes by PCR. PCR was conducted in the FastStart High Fidelity PCR System (Roche, Basel, Switzerland) under the following conditions: 94°C for 3 min followed by 35 cycles of 94°C for 15 s, 55°C for 45 s and 72°C for 1 min, and a final elongation step at 72°C for 8 min. After the PCR procedure, we purified the products using AMPure beads (Beckman coulter, Brea, CA).

Next-generation sequencing using Roche 454 GS-FLX plus Sequencing was performed by the Macrogen Ltd. (Seoul, Korea). Following PCR amplification, the emulsion was chemically broken and the beads carrying the amplified DNA library were recovered and washed by filtration. Positive beads were purified using the biotinylated

primer A (complementary to adaptor A), which binds to streptavidin-coated magnetic beads. The DNA library beads were then separated from the magnetic beads by melting the double-stranded amplification products, leaving a population of bead-bound single-stranded template DNA fragments. The sequencing primer was then annealed to the amplified single-stranded DNA. Lastly, beads carrying amplified single-stranded DNA were counted with a Particle Counter (Beckman Coulter). Sequencing was performed on a Genome Sequencer FLX plus (454 Life Sciences), and each sample was loaded in one region of a 70–75-mm PicoTiter plate (454 Life Sciences) fitted with an eight-lane gasket.

Immunoblot analysis

The liver was lysed with a 20 mM Tris buffer (pH 7.4) containing 2 mM EGTA, 137 mM NaCl, 1% NP40, 10% glycerol, and 12 mM α -glycerol phosphate and protease inhibitors. Lysates containing equal amounts of protein (30–50 μg) were used for immunoblotting with specific antibodies against protein kinase B (PKB/Akt), glycogen synthase (GSK)- 3β , AMP kinase (AMPK), phosphoenolpyruvate carboxykinase (PEPCK), and β -actin, and phosphorylated forms of PKB^{ser473}, GSK- 3β ^{ser9}, and AMPK^{thr172} (Cell Signaling, Danvers, MA), as previously described [24]. The intensity of protein expression was determined using Imagequant TL (Amersham Biosciences, Piscataway, NJ).

Statistical analysis

Statistical analysis was performed using SAS software version 7 (SAS Institute). Sample size was calculated using a G power program (power = 0.90), and sample size of each group was 10. Results were expressed as means \pm standard deviation (SD) when the normal distribution was checked using Proc univariate. The variables that were measured over multiple time points were tested with two-way repeated measure ANOVA, with time and group as the independent variables and an interaction term between time and groups. One-way ANOVA was used to determine the metabolic effects of the OVX-control, CFM, LFE, CFLF, and 17β -estradiol (a positive-control) groups at a single time point, when the results were measured once at the end of the experiment. Significant differences in the main effects among the groups were identified by Tukey's test at $p < 0.05$.

Results

β -Glucan contents of CFM and *L. fermentum* in LFE

The β -glucan contents were 33.4 ± 2.2 g/100 g cauliflower mushroom. The water extracts mainly contained β -glucans (about 95.8%). The yield of its water extracts was 28.8% because some β -glucan was lost during the water extraction process. Rats in the CFM group

Table 1 Serum 17 β -estradiol levels, uterine index, and skin tail temperature

	Control	CFM	LFE	CFLF	Positive-control
Serum 17 β -estradiol levels (pg/mL)	1.6 \pm 0.6 ^b	1.9 \pm 0.7 ^b	1.7 \pm 0.5 ^b	2.0 \pm 0.7 ^b	7.3 \pm 1.1 ^a
Uterine index	0.49 \pm 0.10 ^b	0.52 \pm 0.11 ^b	0.50 \pm 0.12 ^b	0.56 \pm 0.10 ^b	1.80 \pm 0.29 ^a
Tail skin temperature ($^{\circ}$ C)	29.6 \pm 0.17 ^a	28.8 \pm 0.17 ^{ab}	29.3 \pm 0.15 ^a	28.2 \pm 0.14 ^b	27.9 \pm 0.15 ^b
Serum TNF- α (pg/mL)	52.1 \pm 4.6 ^a	46.2 \pm 4.5 ^b	48.5 \pm 4.4 ^{ab}	41.1 \pm 4.2 ^c	42.5 \pm 4.3 ^{bc}
Serum MCP-1 (pg/mL)	60.5 \pm 6.4 ^a	50.4 \pm 5.7 ^b	55.3 \pm 5.6 ^b	43.7 \pm 4.9 ^c	44.5 \pm 4.7 ^c

Values represented means \pm standard deviation ($n = 10$)

Different letters represent a significant difference in Tukey test at $p < 0.05$

CFM 1% water extract of cauliflower mushroom, LFE 0.1% *L. fermentum*, CFLF 1% water extract of cauliflower mushroom +0.1% *L. fermentum*, positive-control 30 μ g/kg body weight 17 β -estradiol, TNF- α tumor necrosis factor- α , MCP-1 monocyte chemoattractant protein-1

consumed 0.15–0.2 g β -glucan and those in the LFE group had $1-2 \times 10^7$ CFU on a daily basis. Rats in the CFLF group consumed 0.15–0.2 g β -glucan plus $1-2 \times 10^7$ *L. fermentum* daily.

Serum 17 β -estradiol levels, uterine index, tail skin temperature and inflammation index

Serum 17 β -estradiol levels were much lower in the OVX-control group than the positive-control group and the levels were slightly higher in CFLF, but it was not significantly different (Table 1). Uterine index was also much lower in the OVX-control group than the positive-control group, and none of the treatments changed the index. Due to the estrogen deficiency, tail skin temperature was higher in OVX-control group than the positive-control (Table 1). Only CFLF lowered skin temperature.

Serum TNF- α and MCP-1 levels, inflammation indexes, were higher in the control group than the positive-control group. They were lower in both CFM and LFE than the control group, and CFLF synergistically decreased then to similar levels as the positive-control group (Table 1).

Energy metabolism

The OVX-control group had higher body weights than the positive-control group and CFLF prevented its increase in OVX rats (Table 2). As a result, final body weight was greater in the OVX-control group than the positive-control group but CFLF also lowered final body weight but it was not significantly different from the OVX-control or positive-control groups (Table 2). Peri-uterine fat and retroperitoneum fat mass, the visceral fat mass, was much greater in OVX-control group than the positive-control group. CFLF lowered the visceral fat mass to less than the OVX-control, but the visceral fat mass in the CFLF was greater than that in the positive-control group (Table 2). The body weight gain and visceral fat mass are associated with the balance of food intake and energy expenditure. Food intake was not significantly different among any of the groups (Table 2). However, OVX-control rats exhibited a decrease in daily energy expenditure compared to the positive-control and CFLF prevented its decrease in OVX rats. Carbohydrate oxidation as an energy fuel was not significantly different among all the groups. However, fat oxidation was much lower in the OVX-control group than the

Table 2 Body composition and energy metabolism at the end of experimental periods

	Control	CFM	LFE	CFLF	Positive-control
Final weight (g)	416 \pm 29 ^a	407 \pm 38 ^a	414 \pm 42 ^a	395 \pm 19 ^{ab}	373 \pm 32 ^b
Weight gain (g)	145 \pm 19 ^a	134 \pm 30 ^{ab}	145 \pm 22 ^a	123 \pm 17 ^b	101 \pm 27 ^c
Peri-uterine fat (g)	15.5 \pm 2.2 ^a	13.6 \pm 1.5 ^{ab}	16.0 \pm 1.9 ^a	12.1 \pm 1.7 ^b	9.9 \pm 1.8 ^c
Retroperitoneum fat (g)	11.3 \pm 1.6 ^a	9.7 \pm 1.1 ^b	11.7 \pm 1.6 ^a	8.2 \pm 0.9 ^c	6.0 \pm 0.8 ^d
Visceral fat mass (g)	26.8 \pm 3.1 ^a	23.3 \pm 2.9 ^b	27.7 \pm 2.9 ^a	20.4 \pm 2.6 ^c	15.9 \pm 2.3 ^d
Food intake (g/day)	13.9 \pm 1.7	14.2 \pm 1.7	14.5 \pm 1.8	14.0 \pm 1.3	13.2 \pm 1.6
Energy expenditure (kcal/kg ^{0.75} /day)	89.4 \pm 10.2 ^b	94.0 \pm 10.7 ^b	88.6 \pm 9.6 ^b	105.5 \pm 11.5 ^a	110.1 \pm 12.7 ^a
Carbohydrate oxidation (mg/kg ^{0.75} /min)	5.1 \pm 0.7	5.3 \pm 0.7	5.0 \pm 0.7	4.9 \pm 0.7	5.3 \pm 0.8
Fat oxidation (mg/kg ^{0.75} /min)	4.4 \pm 0.6 ^b	4.7 \pm 0.6 ^b	4.4 \pm 0.7 ^b	6.3 \pm 0.7 ^a	6.4 \pm 0.8 ^a

Visceral fat was the sum of epididymal fat pads and inguinal fat. Values represented means \pm standard deviation ($n = 10$)

Different letters represent a significant difference in Tukey test at $p < 0.05$

CFM 1% water extract of cauliflower mushroom, LFE 0.1% *L. fermentum*, CFLF 1% water extract of cauliflower mushroom +0.1% *L. fermentum*, positive-control 30 μ g/kg body weight 17 β -estradiol

positive-control group and CFLF protected its decrease in OVX rats (Table 2).

Body composition

BMD in the lumbar spine and femur was much lower in the OVX-control group than the positive-control group (Fig. 1a). CFLF prevented the decrease in BMD in the lumbar spine and femur as much as the positive-control although neither CMF nor LFE prevented it (Fig. 1a). LBM in the hip and leg was also lower in the OVX-control group than the normal-control group, and CFLF exhibited a similar LBM as the positive-control group

(Fig. 1b). In contrast to the LBM, fat mass in the abdomen and leg was much higher in the OVX-control group than the positive-control (Fig. 1c). CFLF lowered fat mass in the abdomen and leg as much as the positive-control group.

Lipid metabolism

OVX-control rats exhibited dyslipidemia including elevated serum total cholesterol, LDL cholesterol, and triglyceride concentrations and lower serum HDL cholesterol concentrations in overnight-fasted states in comparison to the normal-control rats (Table 3). CFM prevented the decrease of serum HDL cholesterol and triglyceride concentrations but not total and LDL cholesterol concentrations in the circulation (Table 3). CFLF protected against the development of dyslipidemia in OVX rats, and lipid profiles in the blood were similar to the positive-control group.

Glucose metabolism

Serum glucose concentrations in overnight-fasted states were higher in the OVX-control rats than the normal-control rats, and CFLF lowered it to concentrations as low as the positive-control rats. Serum insulin concentrations were much higher in the OVX-control group than the positive-control group (Table 3). Serum insulin concentrations were lower in the descending order of OVX-control, CFM, positive-control, LFE, and CFLF. Consistent with serum insulin concentrations, HOMA-IR, an index of insulin resistance, was much higher in OVX-control rats than the positive-control. HOMA-IR was lower in CFM and LFE than in OVX-control, and it was lowest in CFLF among all the groups (Table 3).

OVX-control rats had higher serum glucose concentrations that continued to increase until 60 min after glucose challenge, and then slowly decreased in comparison to the positive-control rats, indicating that the OVX-control rats had increased insulin resistance (Fig. 2a). CFM and LFE rats had peak of serum glucose concentrations at about 40 min, and the concentrations at 40 min were similar in the OVX-control (Fig. 2a). However, serum glucose in CFM and LFM quickly decreased after the peak levels in comparison to the OVX-control group. The peak concentrations in the CFLF and positive-control rats were lower than the OVX-control group, and the levels quickly declined Fig. 2a). Since glucose concentration of most rats peaked at 40 min, the AUC of serum glucose levels was divided into two parts at 40 min after glucose loading. The first part of AUC represented the glucose metabolism by insulin secretion capacity and insulin sensitivity at hyperglycemia whereas the second part of AUC was mainly explained by insulin sensitivity (Fig. 2b). Serum insulin concentrations during OGTT were much higher in control rats than in positive-control

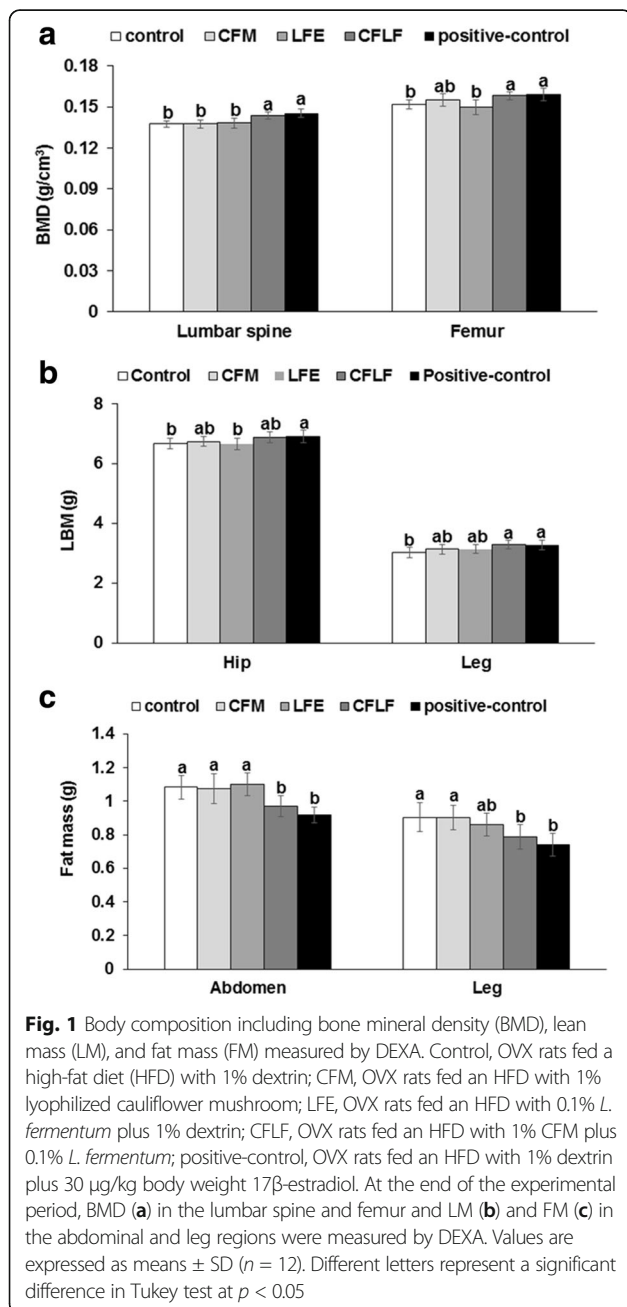


Table 3 Glucose and lipid metabolism in overnight-fasted states

	Control	CFM	LFE	CFLF	Positive-control
Total cholesterol (mg/dL)	146.4 ± 16.4 ^a	149.1 ± 15.2 ^a	147.4 ± 15.2 ^a	126.3 ± 13.0 ^b	123.2 ± 12.5 ^b
HDL cholesterol (mg/dL)	17.7 ± 1.8 ^c	24.8 ± 2.6 ^a	19.9 ± 2.2 ^c	24.1 ± 2.5 ^a	20.9 ± 2.2 ^b
LDL cholesterol (mg/dL)	106.9 ± 11.0 ^a	107.3 ± 12.0 ^a	106.1 ± 11.0 ^a	84.8 ± 8.8 ^b	86.4 ± 9.1 ^b
Triglyceride (mg/dL)	108.8 ± 12.2 ^a	85.4 ± 8.9 ^{bc}	107.1 ± 12.0 ^a	87.1 ± 9.1 ^b	79.4 ± 8.3 ^c
Serum glucose (mg/dL)	122.2 ± 10.7 ^a	115.8 ± 8.4 ^{ab}	116.6 ± 7.7 ^{ab}	113.7 ± 8.6 ^b	112.9 ± 9.1 ^b
Serum insulin (ng/mL)	2.87 ± 0.42 ^a	2.05 ± 0.31 ^b	1.81 ± 0.34 ^c	1.77 ± 0.26 ^c	1.96 ± 0.34 ^{bc}
HOMA-IR	8.4 ± 1.2 ^a	5.9 ± 0.9 ^b	5.2 ± 0.8 ^b	4.5 ± 0.6 ^c	5.5 ± 0.7 ^b
HOMA-B	367 ± 44 ^a	280 ± 40 ^b	256 ± 31 ^b	227 ± 28 ^c	283 ± 32 ^b

Values represented means ± standard deviation (n = 10)

Different letters represent a significant difference in Tukey test at p < 0.05

CFM 1% water extract of cauliflower mushroom, LFE 0.1% *L. fermentum*, CFLF 1% water extract of cauliflower mushroom +0.1% *L. fermentum*, positive-control 30 µg/kg body weight 17β-estradiol

rats whereas the levels were lower in CFM, LFE, and CFLF than the control (Fig. 2c). However, the decrease by the treatments was not as great as the positive-control. The AUC of serum insulin levels was much higher in the control group than in the positive-control group, whereas it was lower in descending order of the control (630 ± 93 ng/mL min), CFM (443 ± 64 ng/mL min), CFLF (344 ± 49 ng/mL min), LFE (316 ± 43 ng/mL min), and positive-control (227 ± 34 ng/mL min).

In IPITT, serum glucose levels markedly decreased until 30–45 min, and then began to rebound from 60 min in all rats after an intraperitoneal injection of insulin (Fig. 3a). After no food for 6 h, serum glucose levels were higher in OVX-control rats than in the positive-control rats and CFLF also lowered the serum glucose levels in OVX rats (Fig. 3a). AUC of serum glucose concentrations during the first part and second part was higher in OVX-control group than in positive-control group whereas CFM and CFLF lowered the AUC as much as the positive-control group (Fig. 3b). OVX-control rats had lower insulin sensitivity and 17β-estradiol, but CFM and CFLF improved the insulin sensitivity.

Hepatic insulin signaling

The phosphorylation of Akt and GSK-3β were much lower in the control group than in the positive-control, and it increased in the ascending order of control, CFM, LFE, CFLF, and positive-control (Fig. 4). PEPCK expression was higher in the control than in the positive-control and CFM, LFE and CFLF decreased its expression. The phosphorylation of AMPK was much lower in the control than in the positive-control, and CFM and CFLF prevented the decrease (Fig. 4). The phosphorylation of AMPK was higher in CFLF than in the positive-control.

Gut microbiome

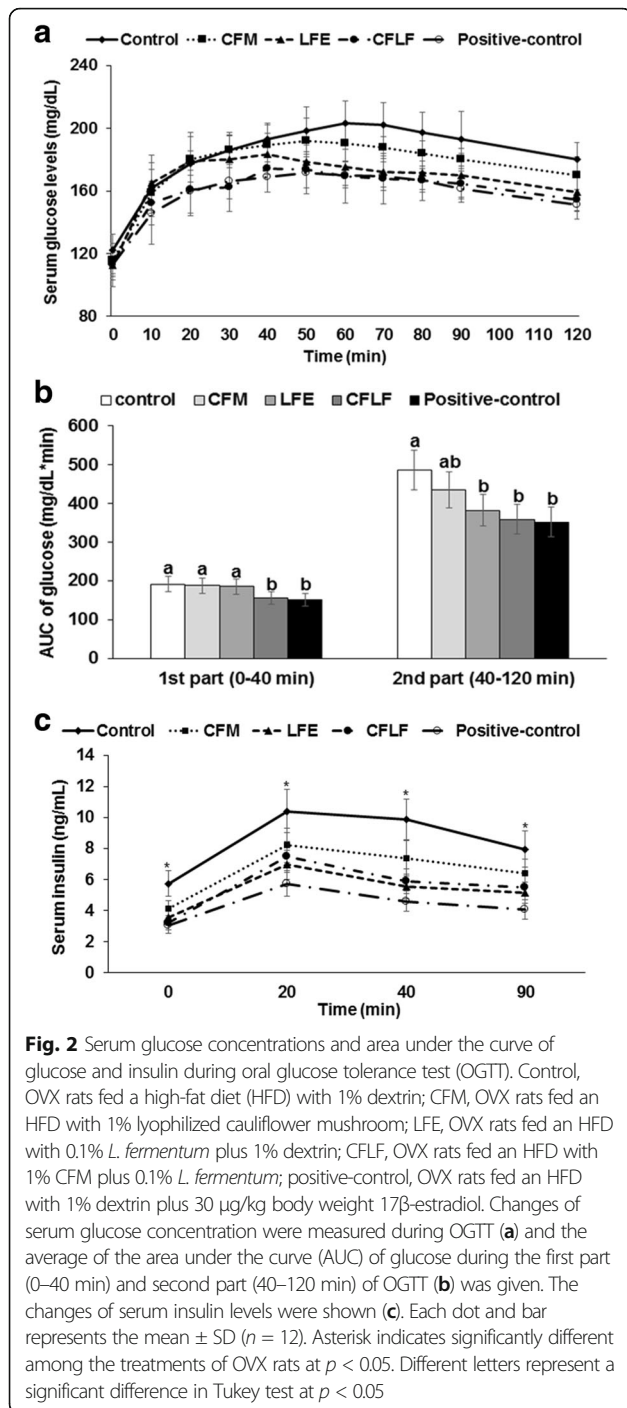
OVX rats exhibited different proportions of taxonomic assignment (Fig. 5). OVX increased the ratio of *Firmicutes*

to *Bacteroidetes*, and the changes were reversed in the positive-control group (Table 4). CFM and LFE prevented the increase in the ratio of *Firmicutes* to *Bacteroidetes*, but it was not as much as CFLF. CFLF lowered the ratio to similar values as the positive-control (Table 4). The number of proteobacteria was reduced in the CFM and CFLF groups, compared to the control group, but it was not significantly different between the control and positive-control groups (Table 4). The growth of proteobacteria was not affected by estrogen deficiency, but it was modulated by β-gluten.

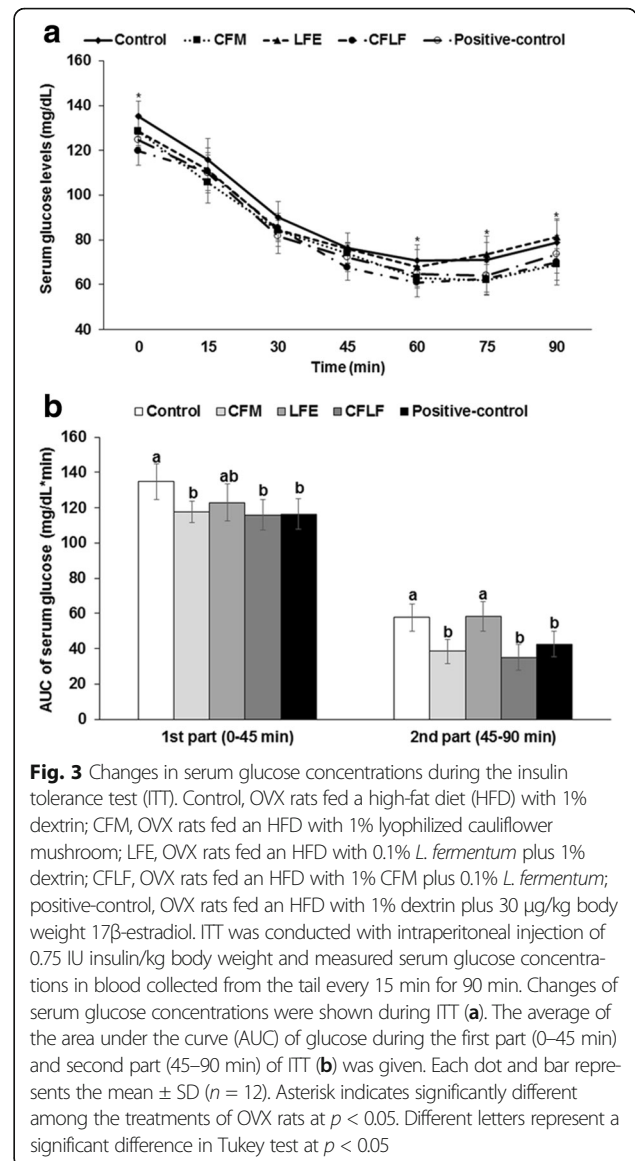
Discussion

Gut microbiota has a profound influence on metabolism, immunity, and protection against pathogens. The gut microbiota also influences obesity and BMD [17, 30], and probiotics, prebiotics, and synbiotics may attenuate menopausal symptoms by modulating gut microbiota in estrogen-deficient animals. However, the efficacy of probiotics, prebiotics, and synbiotics for improving gut microbiota still remains controversial. The present study suggested that OVX changes gut microbiota and the changes are associated with menopausal symptoms, but that the synbiotics, CFM and LFE, can prevent many of the gut microbiota changes and menopausal symptoms in estrogen-deficient animals. CFM itself also alleviated the metabolic disturbances of energy, glucose, lipid, and bone metabolism in OVX rats but it was not as much as CFLF. LFE itself had the least effect. Thus, the synbiotics might be effective for alleviating menopausal symptoms.

Cauliflower mushrooms mainly contain six-branched 1,3-β-glucan (about 40% of the mushroom weight) and small amounts of the flavor components including 3-octanone, DL-3-octanol, and 1-octen-3-ol and vitamin D₂ [31]. Oat β-glucans have been mainly known to lower blood glucose and cholesterol levels in animals and humans [32, 33]. However, cauliflower mushroom has been shown to possess anti-bacterial

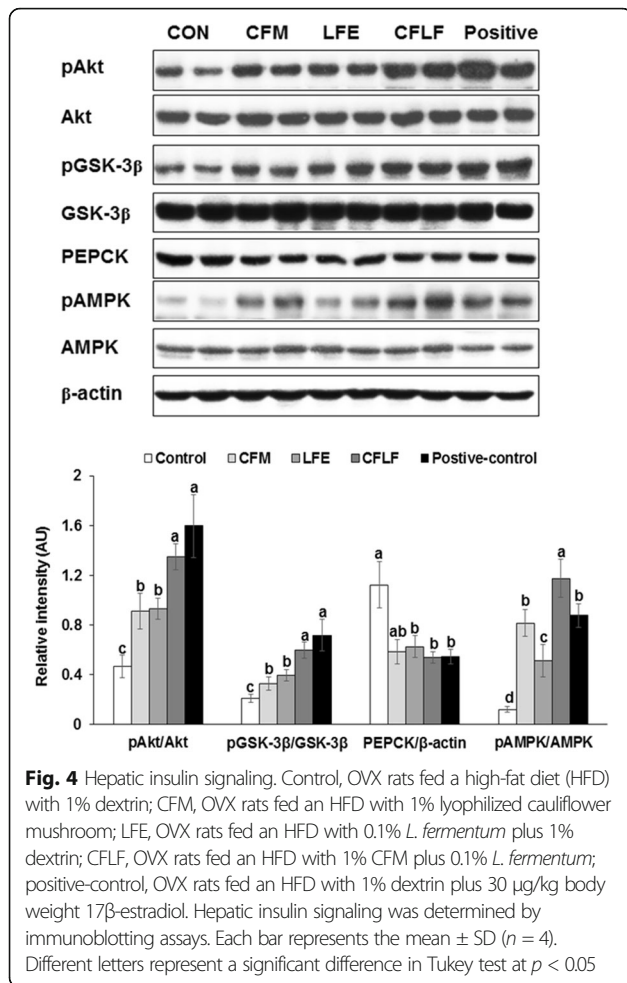


and anti-fungal, anti-inflammatory hypocholesterolemic, and immunomodulatory activities [18, 29, 31]. Thus, β-glucans of different origins might have similar or different activities against metabolic disturbances. β-Glucans in cauliflower mushroom, six-branched 1,3-beta-glucan, are different from β-glucans in oats and barleys. However, no studies have investigated CFM effects on menopausal symptoms. The present study showed some beneficial synbiotic effects of CFM and LFE in an estrogen-deficient animal model.

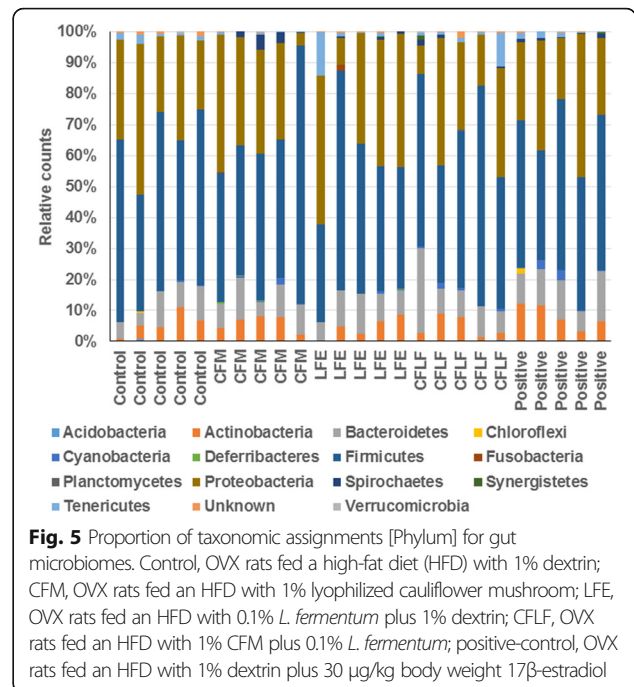


Probiotics and prebiotics can change gut microbiota, but neither of them consistently changes gut microbiota efficiently and synbiotics, a mixture of probiotics and prebiotics, may be more effective for making beneficial changes to the gut microbiota [34]. Probiotics, prebiotics, and synbiotics have mainly been reported to improve bowel-related diseases such as irritable bowel syndrome and colon cancer [35]. In addition, a “leaky gut” may deliver toxins, antigens, or bacteria into the liver and may play a pathogenic role in liver damage [36]. In this aspect, gut microbiota may play an important role by improving intestinal barriers. Recently, gut microbiota have been associated with obesity and its related diseases such as type 2 diabetes and dyslipidemia.

Lactobacillus species have a common characteristic of producing lactic acid or alcohol from sugars. *Lactobacillus* species have probiotic activities, but different species have



specific activities. *L. fermentum* produces lactic acid from sugars, and it is found in sourdough. Since *L. fermentum* tolerates acid environments and 3 g/L of bile salts, it is found to survive in the intestines and it can act as a probiotic, although *L. fermentum* does not use dietary fiber [37]. *L. fermentum* is safe up to a level of 10¹⁰ CFU/kg body weight/day during 2–4 weeks of treatment in animals, and it has also been shown to be safe in infant formulas in 1–6-month old infants [38, 39]. It enables harmful intestinal bacterial enzymes to be inhibited, decreases pathogenic bacterial populations, and increases beneficial bacterial populations [38]. Interestingly, *L. fermentum* was first isolated from healthy elderly Koreans [40] and it has the strongest binding to intestinal epithelial cells and has potent immune-enhancing, anti-inflammatory, anti-oxidative, and anti-dyslipidemia activities and reverses alcohol-induced liver diseases [14, 41, 42]. These studies suggest that *L. fermentum* is a beneficial probiotic in humans. However, it has not been studied for alleviating menopausal symptoms. Previous studies have demonstrated that *L. reuteri* and *Bifidobacterium longum* increased BMD in OVX rats [30, 43] whereas in the present study, LFE itself did not change BMD, but CFM +



LFE elevated BMD to densities as high as the positive-control group. LFE improved glucose tolerance and insulin resistance compared to the control group. In other menopausal symptoms, LFE itself had limited capacity for improving menopausal symptoms in OVX rats, but LFE plus CFM prevented menopausal symptoms as much as 17β-estradiol treatment in the present study. These results suggested that LFE itself did not improve menopausal symptoms as much as CFLF and positive-control groups, but it was associated with the changes of gut microbiota flora. Thus, symbiotic treatment of CFLF may be beneficial for post-menopausal women.

CFM has been reported to have immunomodulatory, anti-tumor, and hypocholesterolemic activities in animals [18, 29, 31], and also β-glucans, the major components of CFM, have hypoglycemic activity [44]. *Bacteroidetes* are well-known bacteria that use dietary fibers as an energy source, and their growth may be increased with CFM [45]. Thus, *Bacteroidetes* can be increased in the intestines when CFM is provided to the animals. CFM may improve the estrogen deficiency-linked disturbances of energy, glucose, lipid, and bone metabolism by modulating gut microbiota. The present study showed that CFM reduced visceral fat mass, serum triglyceride levels, and insulin resistance. CFM partly reduced the ratio of *Firmicutes* and *Bacteroidetes* in comparison to the control group. However, CFLF improved menopausal symptoms much better than CFM. Therefore, CFLF, but not CFM, was sufficient for protecting against menopausal symptoms.

Early studies of the gut microbiomes concentrated on selectively stimulating the growth of a limited number of

Table 4 Gut microbiomes (unit: counts)

	Control	CFM	LFE	CFLF	Positive-control
Actinobacteria	199 ± 31 ^b	209 ± 36 ^b	142 ± 29 ^c	161 ± 28 ^c	295 ± 42 ^a
Firmicutes	1837 ± 241 ^a	1548 ± 224 ^b	1427 ± 251 ^b	1593 ± 232 ^b	1549 ± 236 ^b
Proteobacteria	1323 ± 186 ^a	960 ± 167 ^b	1232 ± 184 ^a	928 ± 142 ^b	1365 ± 192 ^a
Bacteroidetes	268 ± 44 ^c	275 ± 36 ^c	295 ± 42 ^c	368 ± 48 ^b	421 ± 51 ^a
Cyanobacteria	5.8 ± 1.1 ^d	19.4 ± 4.7 ^c	7.2 ± 1.7 ^d	28.8 ± 6.6 ^b	54.6 ± 12.2 ^a
Ratio of F/B ¹	6.85 ± 1.01 ^a	5.64 ± 0.87 ^b	4.84 ± 0.79 ^{bc}	4.33 ± 0.64 ^c	3.68 ± 0.61 ^c

Values represented means ± standard deviation (n = 5)

Different letters represent a significant difference in Tukey test at $p < 0.05$

CFM 1% water extract of cauliflower mushroom, LFE 0.1% *L. fermentum*, CFLF 1% water extract of cauliflower mushroom +0.1% *L. fermentum*, positive-control 30 µg/kg body weight 17β-estradiol

¹The ratio of Firmicutes and Bacteroidetes

health-promoting bacteria; the application of prebiotics was focused on improving host welfare [10]. However, the applications of synbiotics have recently progressed to the alleviation of metabolic diseases [34]. Some studies have reported that synbiotics have beneficial effects on obesity and metabolic syndrome in human clinical studies [46] and synbiotics are somewhat better than individual effects on conditions such as obesity, ethanol-induced hepatic steatosis, and inflammation-related diseases [34, 47]. The present study also definitively demonstrated that synbiotics had much better efficacy for improving menopausal symptoms than either CFM or LFE alone. CFLF prevented the disturbance of energy, glucose, and lipid metabolism in OVX rats and also it reduced fat mass and increased BMD. In parallel with the alleviation of menopausal symptoms, the gut microbiota in the CFLF group showed similar patterns as the positive-control group: CFLF reduced the ratio of *Firmicutes* and *Bacteroidetes* and increased total counts of bacteria in the gut.

Conclusions

Estrogen deficiency causes menopausal symptoms including higher tail skin temperature, increasing visceral fat mass, dyslipidemia, glucose intolerance, and BMD loss. Additionally, estrogen-deficient rats had higher ratios of *Firmicutes* to *Bacteroidetes* and lower total bacterial counts. CFM containing mainly β-glucans partly prevented the disturbance of glucose and lipid metabolism while potentiating hepatic insulin signaling without changing serum 17β-estradiol levels. Although LFE itself did not protect against the metabolic disturbance caused by estrogen deficiency, CFLF synergistically improved energy, glucose, lipid, and bone metabolism as much as the positive-control group. The improvement of metabolism was associated with the prevention of gut microbiota patterns. Therefore, the synbiotics, CFM and LFE, can be a potential therapeutic agent for menopausal symptoms in post-menopausal women.

Abbreviations

AMPK: AMP kinase; AUCG: Area under the curve of glucose; AUCI: Area under the curve of insulin; BMD: Bone mineral density; CFLF: 1% CFM plus 0.1% LFE; CFM: Cauliflower mushroom plus 0.1% casein; DEXA: Dual-energy X-ray absorptiometer; En%: Energy percent; ER: Estrogen receptor; GSK-3β: Glycogen synthase-3β; HOMA-IR: Homeostasis model assessment estimate of insulin resistance; IL-1β: Interleukin-1β; IPITT: Intraperitoneal insulin tolerance test; LFE: 0.1% *L. fermentum* plus 1% dextrin; MCP-1: Monocyte chemoattractant protein-1; OGTT: Oral glucose tolerance test; OVX: Ovariectomy; PEPCK: Phosphoenol-pyruvate carboxykinase; PKB/Akt: Protein kinase B; TNF-α: Tumor necrosis factor-α; VCO₂: Average carbon dioxide production; VO₂: Average oxygen consumption

Funding

This study was supported by a grant from Traditional Culture Convergence Research Program through the National Research Foundation of Korea(NRF) funded by the Ministry of Science and ICT (NRF- 2016M3C1B5907152) and the Business for Cooperative R&D between Industry, Academy, and Research Institute funded Korea Small and Medium Business Administration.

Availability of data and materials

The datasets supporting the conclusions of this article are included within the article.

Authors' contributions

SP and SYJ participated in the experimental design; SK and NRL conducted the animal studies; SYJ performed biochemical studies. SP and SYJ wrote the manuscript. All authors participated in analysis of the data and review of the manuscript. All authors read and approved the final manuscript.

Ethics approval

This study was approved by the Animal Care and Use Committee of Hoseo University, Korea (2014-01).

Consent for publication

All authors have agreed to its publication in *Genes and Nutrition*.

Competing interests

The authors declare that they have no competing interests.

Publisher's Note

Springer Nature remains neutral with regard to jurisdictional claims in published maps and institutional affiliations.

Author details

¹Department of R&D, Microbial Institute for Fermentation Industry, Sunchang, South Korea. ²Department of Food & Nutrition, Obesity/Diabetes Center, Hoseo University, 165 Sechul-Ri, BaeBang-Yup, Asan-Si, ChungNam-Do 336-795, South Korea.

Received: 4 September 2017 Accepted: 18 October 2017

Published online: 09 November 2017

References

- Stevenson JC, Panay N, Pexman-Fieth C. Oral estradiol and dydrogesterone combination therapy in postmenopausal women: review of efficacy and safety. *Maturitas*. 2013;76:10–21.
- Patterson E, Ryan PM, Cryan JF, Dinan TG, Ross RP, Fitzgerald GF, et al. Gut microbiota, obesity and diabetes. *Postgrad Med J*. 2016;92:286–300.
- Brahe LK, Le Chatelier E, Prifti E, Pons N, Kennedy S, Blaedel T, et al. Dietary modulation of the gut microbiota—a randomized controlled trial in obese postmenopausal women. *Br J Nutr*. 2015;114:406–17.
- Markle JG, Frank DN, Mortin-Toth S, Robertson CE, Feazel LM, Rolle-Kampczyk U, et al. Sex differences in the gut microbiome drive hormone-dependent regulation of autoimmunity. *Science*. 2013;339:1084–8.
- Plottel CS, Blaser MJ. Microbiome and malignancy. *Cell Host Microbe*. 2011;10:324–35.
- Flores R, Shi J, Fuhrman B, Xu X, Veenstra TD, Gail MH, et al. Fecal microbial determinants of fecal and systemic estrogens and estrogen metabolites: a cross-sectional study. *J Transl Med*. 2012;10:253.
- Menon R, Watson SE, Thomas LN, Allred CD, Dabney A, Azcarate-Peril MA, et al. Diet complexity and estrogen receptor beta status affect the composition of the murine intestinal microbiota. *Appl Environ Microbiol*. 2013;79:5763–73.
- Cox-York KA, Sheflin AM, Foster MT, Gentile CL, Kahl A, Koch LG, et al. Ovariectomy results in differential shifts in gut microbiota in low versus high aerobic capacity rats. *Physiol Rep*. 2015;3:e12488–502.
- Guadamuro L, Delgado S, Redruello B, Florez AB, Suarez A, Martinez-Cambor P, et al. Equol status and changes in fecal microbiota in menopausal women receiving long-term treatment for menopause symptoms with a soy-isoflavone concentrate. *Front Microbiol*. 2015;6:777–87.
- Gibson GR, Roberfroid MB. Dietary modulation of the human colonic microbiota: introducing the concept of prebiotics. *J Nutr*. 1995;125:1401–12.
- Reid G, Jass J, Sebulsky MT, McCormick JK. Potential uses of probiotics in clinical practice. *Clin Microbiol Rev*. 2003;16:658–72.
- Swain MR, Anandharaj M, Ray RC, Parveen RB. Fermented fruits and vegetables of Asia: a potential source of probiotics. *Biotechnol Res Int*. 2014;2014:250424–35.
- Russo M, Fabersani E, Abejion-Mukdsi MC, Ross R, Fontana C, Benitez-Paez A, et al. *Lactobacillus fermentum* CRL1446 ameliorates oxidative and metabolic parameters by increasing intestinal feruloyl esterase activity and modulating microbiota in caloric-restricted mice. *Nutrients*. 2016;8:415–29.
- Tomaro-Duchesneau C, Saha S, Malhotra M, Jones ML, Rodes L, Prakash S. *Lactobacillus fermentum* NCIMB 5221 and NCIMB 2797 as cholesterol-lowering probiotic biotherapeutics: in vitro analysis. *Benef Microbes*. 2015;6:861–9.
- Gibson GR. Dietary modulation of the human gut microflora using the prebiotics oligofructose and inulin. *J Nutr*. 1999;129:1438s–41s.
- Goetze O, Fruehauf H, Pohl D, Giarre M, Rochat F, Ornstein K, et al. Effect of a probiotic mixture on intestinal comfort and general wellbeing in health. *Br J Nutr*. 2008;100:1077–85.
- Vitali B, Ndagijimana M, Cruciani F, Carnevali P, Candela M, Guerzoni ME, et al. Impact of a synbiotic food on the gut microbial ecology and metabolic profiles. *BMC Microbiol*. 2010;10:4–14.
- Hida TH, Kawaminami H, Ishibashi K, Miura NN, Adachi Y, Ohno N. Oral administration of soluble beta-glucan preparation from the cauliflower mushroom, *Sparassis crispa* (Higher Basidiomycetes) modulated cytokine production in mice. *Int J Med Mushrooms*. 2013;15:525–38.
- Ferrario C, Statello R, Carnevali L, Mancabelli L, Milani C, Mangifesta M, et al. How to feed the mammalian gut microbiota: bacterial and metabolic modulation by dietary fibers. *Front Microbiol*. 2017;8:1749.
- Ko BS, Lee HW, Kim DS, Kang S, Ryuk JA, Park S. Supplementing with *Opuntia ficus-indica* Mill and *Dioscorea nipponica* Makino extracts synergistically attenuates menopausal symptoms in estrogen-deficient rats. *J Ethnopharmacol*. 2014;155:267–76.
- Choi JS. Acid-resistant microorganism *Lactobacillus fermentum* JS, and composition containing the same microorganism. KR100435168B1. 2003.
- Bai SP, AM W, Ding XM, Lei Y, Bai J, Zhang KY, et al. Effects of probiotic-supplemented diets on growth performance and intestinal immune characteristics of broiler chickens. *Poult Sci*. 2013;92:663–70.
- Lee DS. Compositions containing green tea and lactic-acid bacteria. KR20070056153A. 2009.
- Kim MJ, Park JH, Kwon DY, Yang HJ, Kim DS, Kang S, et al. The supplementation of Korean mistletoe water extracts reduces hot flushes, dyslipidemia, hepatic steatosis, and muscle loss in ovariectomized rats. *Exp Biol Med*. 2015;240:477–87.
- Litwak SA, Wilson JL, Chen W, Garcia-Rudaz C, Khaksari M, Cowley MA, et al. Estradiol prevents fat accumulation and overcomes leptin resistance in female high-fat diet mice. *Endocrinology*. 2014;155:4447–60.
- Park S, Kang S, Jeong DY, Jeong SY, Park JJ, Yun HS. Cyanidin and malvidin in aqueous extracts of black carrots fermented with *Aspergillus oryzae* prevent the impairment of energy, lipid and glucose metabolism in estrogen-deficient rats by AMPK activation. *Genes Nutr*. 2015;10:455–69.
- Reeves PG, Nielsen FH, Fahey GC Jr. AIN-93 purified diets for laboratory rodents: final report of the American Institute of Nutrition ad hoc writing committee on the reformulation of the AIN-76A rodent diet. *J Nutr*. 1993;123:1939–51.
- Hermans MP, Ahn SA, Mahadeb YP, Rousseau MF. Sleep apnoea syndrome and 10-year cardiovascular risk in females with type 2 diabetes: relationship with insulin secretion and insulin resistance. *Diabetes Metab Res Rev*. 2013;29:227–34.
- Hong KB, Hong SY, Joung EY, Kim BH, Bae SH, Park Y, et al. Hypocholesterolemic effects of the cauliflower culinary-medicinal mushroom, *Sparassis crispa* (higher Basidiomycetes), in diet-induced hypercholesterolemic rats. *Int J Med Mushrooms*. 2015;17:965–75.
- Britton RA, Irwin R, Quach D, Schaefer L, Zhang J, Lee T, et al. Probiotic *L. reuteri* treatment prevents bone loss in a menopausal ovariectomized mouse model. *J Cell Physiol*. 2014;229:1822–30.
- Kimura T. Natural products and biological activity of the pharmacologically active cauliflower mushroom *Sparassis crispa*. *Biomed Res Int*. 2013;2013:982317–26.
- Charlton KE, Tapsell LC, Batterham MJ, O'Shea J, Thorne R, Beck E, et al. Effect of 6 weeks' consumption of beta-glucan-rich oat products on cholesterol levels in mildly hypercholesterolaemic overweight adults. *Brit J Nutr*. 2012;107:1037–47.
- Wang Q, Ellis PR. Oat beta-glucan: physico-chemical characteristics in relation to its blood-glucose and cholesterol-lowering properties. *Brit J Nutr*. 2014;112(Suppl 2):S4–s13.
- Kolida S, Gibson GR. Synbiotics in health and disease. *Annu Rev Food Sci Technol*. 2011;2:373–93.
- Wasilewski A, Zielinska M, Storr M, Fichna J. Beneficial effects of probiotics, prebiotics, synbiotics, and psychobiotics in inflammatory bowel disease. *Inflamm Bowel Dis*. 2015;21:1674–82.
- Fukui H. Gut-liver axis in liver cirrhosis: how to manage leaky gut and endotoxemia. *World J Hepatol*. 2015;7:425–42.
- Pan DD, Zeng XQ, Yan YT. Characterisation of *Lactobacillus fermentum* SM-7 isolated from koumiss, a potential probiotic bacterium with cholesterol-lowering effects. *J Sci Food Agric*. 2011;91:512–8.
- Shokryazdan P, Faseeh Jahromi M, Liang JB, Kalavathy R, Sieo CC, Ho YW. Safety assessment of two new *Lactobacillus* strains as probiotic for human using a rat model. *PLoS One*. 2016;11:e0159851–60.
- Maldonado-Lobon JA, Gil-Campos M, Maldonado J, Lopez-Huertas E, Flores-Rojas K, Valero AD, et al. Long-term safety of early consumption of *Lactobacillus fermentum* CECT5716: a 3-year follow-up of a randomized controlled trial. *Pharmacol Res*. 2015;95-96:12–9.
- Park JS, Shin E, Hong H, Shin HJ, Cho YH, Ahn KH, et al. Characterization of *Lactobacillus fermentum* PL9988 isolated from healthy elderly Korean in a longevity village. *J Microbiol Biotechnol*. 2015;25:1510–8.
- Archer AC, Muthukumar SP, Halami PM. Anti-inflammatory potential of probiotic *Lactobacillus* spp. on carrageenan induced paw edema in Wistar rats. *Int J Biol Macromol*. 2015;81:530–7.
- Barone R, Rappa F, Macaluso F, Caruso Bavisotto C, Sangiorgi C, Di Paola G, et al. Alcoholic liver disease: a mouse model reveals protection by *Lactobacillus fermentum*. *Clin Transl Gastroenterol*. 2016;7:e138–51.
- Parvaneh K, Ebrahimi M, Sabran MR, Karimi G, Hwei AN, Abdul-Majeed S, et al. Probiotics (*Bifidobacterium longum*) increase bone mass density and upregulate SPARC and BMP-2 genes in rats with bone loss resulting from ovariectomy. *Biomed Res Int*. 2015;2015:897639-48.
- Shen XL, Zhao T, Zhou Y, Shi X, Zou Y, Zhao G. Effect of oat beta-glucan intake on glycaemic control and insulin sensitivity of diabetic patients: a meta-analysis of randomized controlled trials. *Nutrients*. 2016;8:39–49.

45. Reeves AR, Wang GR, Salyers AA. Characterization of four outer membrane proteins that play a role in utilization of starch by *Bacteroides thetaiotaomicron*. *J Bacteriol.* 1997;179:643–9.
46. Saez-Lara MJ, Robles-Sanchez C, Ruiz-Ojeda FJ, Plaza-Diaz J, Gil A. Effects of probiotics and synbiotics on obesity, insulin resistance syndrome, type 2 diabetes and non-alcoholic fatty liver disease: a review of human clinical trials. *Int J Mol Sci.* 2016;17:928–43.
47. Chiu WC, Huang YL, Chen YL, Peng HC, Liao WH, Chuang HL, et al. Synbiotics reduce ethanol-induced hepatic steatosis and inflammation by improving intestinal permeability and microbiota in rats. *Food Funct.* 2015;6:1692–700.

Submit your next manuscript to BioMed Central and we will help you at every step:

- We accept pre-submission inquiries
- Our selector tool helps you to find the most relevant journal
- We provide round the clock customer support
- Convenient online submission
- Thorough peer review
- Inclusion in PubMed and all major indexing services
- Maximum visibility for your research

Submit your manuscript at
www.biomedcentral.com/submit

